



# TEK PREFABRİK

Prefabrik, Çelik ev ve Konteyner



## PREFABRİK KONUT KATALOĞU

PREFABRICATED HOUSING  
CATALOG

2023

# Hakkımızda

Tek Prefabrik 2000 yılından hizmete başlamıştır. Bünyesinde prefabrik, konteyner ve hafif çelik yapılar iş alanlarını bulundurmaktadır.

Uygun üretim-hizmet koşulları oluşturduğumuz ve yerel kaynaklar ile küresel ticaret piyasasına yönelik belirlediğimiz sektörlerde faaliyetlerini sürdüren firmamız, genç yaşında yakalamış olduğu başarıyı güvenilir ve istikrarlı yapısıyla geleceğe de taşımaktadır.

Gerek yurtiçinde gerekse de yurtdışında ülkece yoğun ticari faaliyetlerimizin olduğu inşaat sektöründe HAFİF ÇELİK YAPILAR ve ÇELİK YAPILAR üretimine önem vermekteyiz. Dünyada kullanım oranı oldukça yüksek olan bu yapı türleri, ülkemizde son dönemlerde tanınmaya başlamıştır. Deprem kuşağında yer alan coğrafyamızdan dolayı da gittikçe üretim ve kullanım alanı genişlemektedir. Kullanım alanlarını konut villalar, hangarlar, okullar, hastaneler, sosyal tesisler, ofis tesisleri ve oteller olarak sıralayabiliriz. Bu yapı sisteminin deprem konutu olarak değil, tamamen geri dönüşümlü kalıcı ve güvenli yapı sistemi olarak görülmesi gerekmektedir. Ayrıca kişiye ve konuma göre özel olarak tasarlanan mimari yapısıyla bireysel olarak ilgilenilen müşterinin tüm ihtiyaçlarına karşılık veriyor.

Yurtdışı şantiyelerine sağladığı işçi istihdamıyla bugüne kadar Rusya, Kazakistan, Irak, Cezayir, Moritanya, Libya, Katar, Azerbaycan gibi ülkelerde saha montaj ekibine tecrübe katmış olan Tek Prefabrik, böylelikle şantiyede kalifiye işçilik ve üretim hızıyla ön plana çıkıyor.

Müşteri memnuniyetini esas alarak çalışan firmamız ; teknik ve idari personeliyle müşteri ihtiyaçları doğrultusunda hızlı ve kaliteli çözümler sunmaktadır.

Almanya, Türkmenistan, Kuzey Afrika, Irak, İran , Azerbaycan, İngiltere, Libya, Tacikistan, Romanya, Sudan, Bulgaristan, Nijerya, Suudi Arabistan, Ukrayna, Gürcistan dahil dünyanın bir çok ülkesinde varlığımızı sürdürmenin ve ülkemizi başarıyla temsil etmenin gururunu taşımaktayız.

# VİZYON & MİSYON

## VİZYON

Türkiye pazarında liderliğini sürdüren ve Tek Prefabrik, iş yapış şekline lider, çevreye ve topluma saygılı, tercih edilen yenilikçi bir şirket olmak.

## MİSYON

Sürdürülebilir bir geleceğe yatırım yaparak müşterilerin tercih edilen prefabrik ve konteyner tedarikçisi olmak, kurum kültür ve değerlerimizi nesilden nesile aktararak tüm paydaşlarımıza katkıda bulunmak.

# KALİTE POLİTİKAMIZ

Standart, mevzuatlar ve teknolojiye paralel çalışmak.

Sürekli gelişen ürün. hizmetlerimiz ve personelimiz ile müşteri memnuniyetini üst düzeyde tutmak.

Kaliteyi ve yönetim sistemimizi sürekli iyileştirmeye yönelik faaliyetlerde bulunarak prefabrik sektöründe lider firmalar arasında yer almak.

Hedefe ulaşmak için çizdiğimiz rotada;

Müşteri beklentilerini karşılamaya,

Ulusal ve uluslararası standartların gerekliliklerini sağlamaya,

Yasal mevzuat şartlarını karşılamaya,

Geleceğe temiz bir dünya bırakmaya gayret ederiz.

Kalite Politikamızdır.



## ABOUT US

Tek Prefabrik started its service in 2000. It includes prefabricated, container and light steel structures business areas.

Our company, which continues its activities in the sectors that we have created suitable production-service conditions and determined for the global trade market with local resources, carries the success it has achieved at a young age to the future with its reliable and stable structure.

We attach importance to the production of LIGHT STEEL STRUCTURES and STEEL STRUCTURES in the construction sector, where we have intense commercial activities both at home and abroad. These building types, which have a very high usage rate in the world, have recently started to be recognized in our country. Due to our geography located in the earthquake zone, the area of production and use is gradually expanding. We can list the usage areas as residential villas, hangars, schools, hospitals, social facilities, office facilities and hotels. This building system should not be seen as earthquake housing, but as a completely recyclable, permanent and safe building system. In addition, with its architectural structure specially designed for the person and the location, it responds to all the needs of the customer who is individually interested.

Tek Prefabrik, which has so far added experience to its field assembly team in countries such as Russia, Kazakhstan, Iraq, Algeria, Mauritania, Libya, Qatar, Azerbaijan, with the employment of workers it has provided for construction sites abroad, thus stands out with its qualified workmanship and production speed at the construction site.

Our company, which works on the basis of customer satisfaction; With its technical and administrative staff, it offers fast and quality solutions in line with customer needs.

We are proud of continuing our existence and successfully representing our country in many countries of the world, including Germany, Turkmenistan, North Africa, Iraq, Iran, Azerbaijan, England, Libya, Tajikistan, Romania, Sudan, Bulgaria, Nigeria, Saudi Arabia, Ukraine and Georgia.



# VISION & MISSION

## VISION

To be a preferred innovative company that maintains its leadership in the Turkish market and is Tek Prefabrik, a leader in the way it does business, respecting the environment and society.

## MISSION

To be the preferred prefabricated and container supplier of customers by investing in a sustainable future, to contribute to all our stakeholders by transferring our corporate culture and values from generation to generation.

# OUR QUALITY POLİCY

Working in parallel with standards, regulations and technology.

A constantly evolving product. To keep customer satisfaction at the highest level with our services and staff.

To be among the leading companies in the prefabricated sector by carrying out activities to continuously improve our quality and management system.

On the route we have drawn to reach the goal;

To meet customer expectations,

To meet the requirements of national and international standards,

To meet the legal regulations,

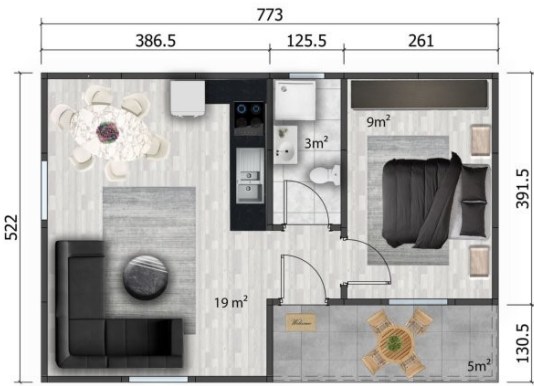
We strive to leave a clean world for the future.

Our Quality Policy



Tek-p

# 40 M<sup>2</sup>



Kat planı / Floor plan

SALON/LIVINGROOM	19M <sup>2</sup>
BANYO / BATHROOM	3M <sup>2</sup>
YATAK ODASI/BEDROOM	9M <sup>2</sup>
VERANDA / PORCH	5M <sup>2</sup>



Tek-p

# 45 M<sup>2</sup>



Kat planı / Floor plan

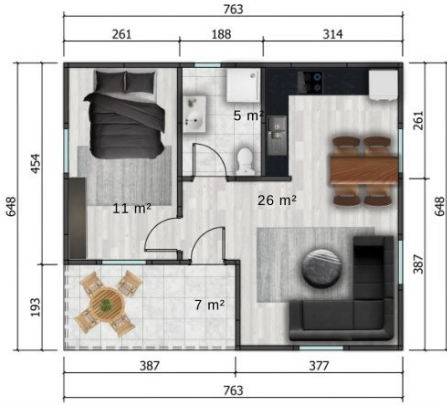
SALON/LIVINGROOM	15 M <sup>2</sup>
BANYO / BATHROOM	3M <sup>2</sup>
MUTFAK / KITCHEN	4M <sup>2</sup>
YATAK ODASI/BEDROOM	10M <sup>2</sup>
YATAK ODASI 2 / BEDROOM 2	6M <sup>2</sup>
VERANDA / PORCH	5M <sup>2</sup>







Tek-p  
**49 M<sup>2</sup>**



Kat planı / Floor plan

SALON/LIVINGROOM	26 M <sup>2</sup>
BANYO / BATHROOM	5M <sup>2</sup>
YATAK ODASI/BEDROOM	11M <sup>2</sup>
VERANDA/ PORCH	7M <sup>2</sup>



Tek-p  
**49 M<sup>2</sup>**



Kat planı / Floor plan

SALON/LIVINGROOM	22 M <sup>2</sup>
BANYO / BATHROOM	4M <sup>2</sup>
YATAK ODASI/BEDROOM	12M <sup>2</sup>
YATAK ODASI 2 / BEDROOM 2	8M <sup>2</sup>







Tek-p

# 54M<sup>2</sup>



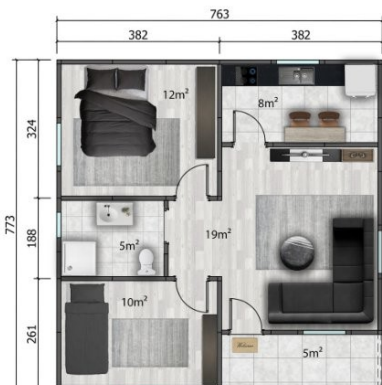
### Kat planı / Floor plan

SALON / LIVINGROOM	25 M <sup>2</sup>
BANYO / BATHROOM	4 M <sup>2</sup>
MUTFAK / KITCHEN	12 M <sup>2</sup>
YATAK ODASI / BEDROOM	8 M <sup>2</sup>
VERANDA / PORCH	5 M <sup>2</sup>



Tek-p

# 59 M<sup>2</sup>



### Kat planı / Floor plan

SALON / LIVINGROOM	19 M <sup>2</sup>
BANYO / BATHROOM	5 M <sup>2</sup>
MUTFAK / KITCHEN	8 M <sup>2</sup>
YATAK ODASI / BEDROOM	12 M <sup>2</sup>
YATAK ODASI 2 / BEDROOM 2	10 M <sup>2</sup>
VERANDA / PORCH	5 M <sup>2</sup>







Tek-p  
**61 M<sup>2</sup>**



**Kat planı / Floor plan**

SALON/LIVINGROOM	19 M <sup>2</sup>
BANYO / BATHROOM	5M <sup>2</sup>
MUTFAK / KITCHEN	8M <sup>2</sup>
YATAK ODASI/BEDROOM	12M <sup>2</sup>
YATAK ODASI 2 / BEDROOM 2	10M <sup>2</sup>
VERANDA/ PORCH	7M <sup>2</sup>



Tek-p  
**69 M<sup>2</sup>**



**Kat planı / Floor plan**

SALON/LIVINGROOM	19 M <sup>2</sup>
BANYO / BATHROOM	5M <sup>2</sup>
MUTFAK / KITCHEN	7M <sup>2</sup>
YATAK ODASI/BEDROOM	14M <sup>2</sup>
YATAK ODASI 2 / BEDROOM 2	10M <sup>2</sup>
VERANDA / PORCH	7M <sup>2</sup>
ANTRE / ENTRANCE	7M <sup>2</sup>







Tek-p

**72M<sup>2</sup>**

**Kat planı / Floor plan**

SALON/LIVINGROOM	16 M <sup>2</sup>
BANYO / BATHROOM	5M <sup>2</sup>
MUTFAK / KITCHEN	12M <sup>2</sup>
YATAK ODASI/BEDROOM	12M <sup>2</sup>
YATAK ODASI 2 / BEDROOM 2	14M <sup>2</sup>
VERANDA / PORCH	3M <sup>2</sup>
ANTRE / ENTRANCE	10M <sup>2</sup>



Tek-p

**73 M<sup>2</sup>**

**Kat planı / Floor plan**

SALON/LIVINGROOM	33 M <sup>2</sup>
BANYO / BATHROOM	7M <sup>2</sup>
MUTFAK / KITCHEN	7M <sup>2</sup>
YATAK ODASI/BEDROOM	12M <sup>2</sup>
YATAK ODASI 2 / BEDROOM 2	14M <sup>2</sup>
VERANDA / PORCH	7M <sup>2</sup>
ANTRE / ENTRANCE	7M <sup>2</sup>







Tek-p  
**74 M<sup>2</sup>**



**Kat planı / Floor plan**

SALON/LIVINGROOM	15 M <sup>2</sup>
BANYO / BATHROOM	6M <sup>2</sup>
WC	3M <sup>2</sup>
MUTFAK / KITCHEN	10M <sup>2</sup>
YATAK ODASI/BEDROOM	12M <sup>2</sup>
YATAK ODASI 2 / BEDROOM 2	10M <sup>2</sup>
VERANDA / PORCH	10M <sup>2</sup>
ANTRE / ENTRANCE	8M <sup>2</sup>



Tek-p  
**75 M<sup>2</sup>**



**Kat planı / Floor plan**

SALON/LIVINGROOM	24 M <sup>2</sup>
BANYO / BATHROOM	5M <sup>2</sup>
MUTFAK / KITCHEN	10M <sup>2</sup>
YATAK ODASI/BEDROOM	15M <sup>2</sup>
YATAK ODASI 2 / BEDROOM 2	12M <sup>2</sup>
ANTRE / ENTRANCE	9M <sup>2</sup>







Tek-p  
**77M<sup>2</sup>**



Tek-p  
**78 M<sup>2</sup>**



#### Kat planı / Floor plan

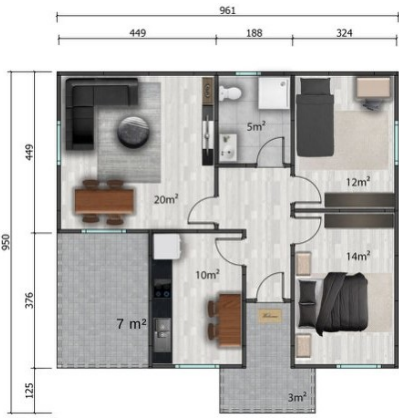
SALON/LIVINGROOM	24M <sup>2</sup>
BANYO / BATHROOM	5M <sup>2</sup>
MUTFAK / KITCHEN	10M <sup>2</sup>
YATAK ODASI/BEDROOM	10M <sup>2</sup>
YATAK ODASI 2 / BEDROOM 2	12M <sup>2</sup>
VERANDA/ PORCH	8M <sup>2</sup>
ANTRE / ENTRANCE	9M <sup>2</sup>







Tek-p  
**79 M<sup>2</sup>**

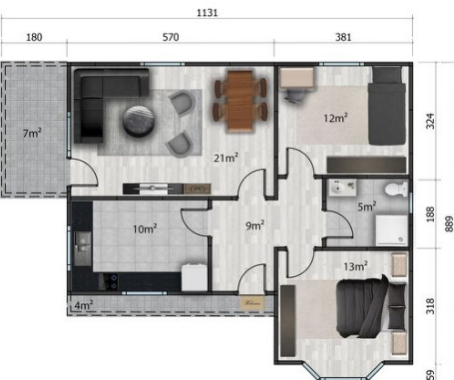


**Kat planı / Floor plan**

SALON/LIVINGROOM	20M <sup>2</sup>
BANYO / BATHROOM	5M <sup>2</sup>
MUTFAK / KITCHEN	10M <sup>2</sup>
YATAK ODASI / BEDROOM	14M <sup>2</sup>
YATAK ODASI 2 / BEDROOM 2	12M <sup>2</sup>
VERANDA / PORCH	7M <sup>2</sup>
GİRİŞ / ENTRANCE	3M <sup>2</sup>



Tek-p  
**81 M<sup>2</sup>**



**Kat planı / Floor plan**

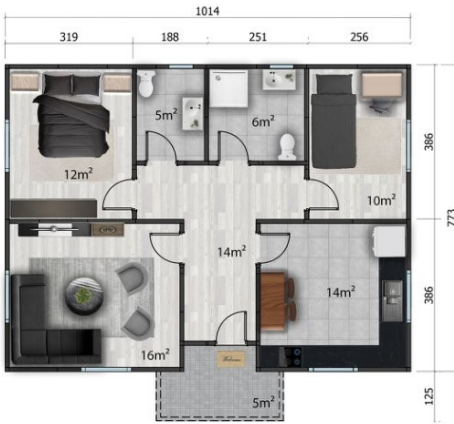
SALON/LIVINGROOM	21M <sup>2</sup>
BANYO / BATHROOM	5M <sup>2</sup>
MUTFAK / KITCHEN	10M <sup>2</sup>
YATAK ODASI / BEDROOM	13M <sup>2</sup>
YATAK ODASI 2 / BEDROOM 2	12M <sup>2</sup>
VERANDA / PORCH	7M <sup>2</sup>
GİRİŞ / ENTRANCE	4M <sup>2</sup>







Tek-p

82 M<sup>2</sup>

Tek-p

84 M<sup>2</sup>
**Kat planı / Floor plan**

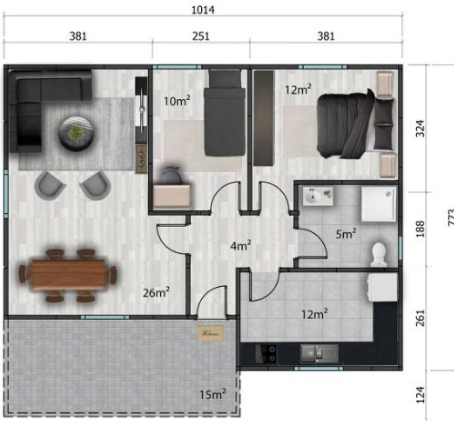
SALON/LIVINGROOM	19M <sup>2</sup>
BANYO / BATHROOM	5M <sup>2</sup>
MUTFAK / KITCHEN	14M <sup>2</sup>
YATAK ODASI/BEDROOM	10M <sup>2</sup>
YATAK ODASI 2 / BEDROOM 2	12M <sup>2</sup>
VERANDA/ PORCH	14M <sup>2</sup>
ANTRE / ENTRANCE	10M <sup>2</sup>







Tek-p  
**84 M<sup>2</sup>**



Tek-p  
**86 M<sup>2</sup>**







Tek-p  
**88 M<sup>2</sup>**



#### Kat planı / Floor plan

SALON/LIVINGROOM	24M <sup>2</sup>
BANYO / BATHROOM	5M <sup>2</sup>
MUTFAK / KITCHEN	12M <sup>2</sup>
YATAK ODASI / BEDROOM	14M <sup>2</sup>
YATAK ODASI 2 / BEDROOM 2	10M <sup>2</sup>
VERANDA / PORCH	14M <sup>2</sup>
ANTRE / ENTRANCE	9M <sup>2</sup>



Tek-p  
**91 M<sup>2</sup>**



#### Kat planı / Floor plan

SALON/LIVINGROOM	29M <sup>2</sup>
BANYO / BATHROOM	5M <sup>2</sup>
MUTFAK / KITCHEN	12M <sup>2</sup>
YATAK ODASI / BEDROOM*2	12M <sup>2</sup>
VERANDA / PORCH	13M <sup>2</sup>
ANTRE / ENTRANCE	8M <sup>2</sup>



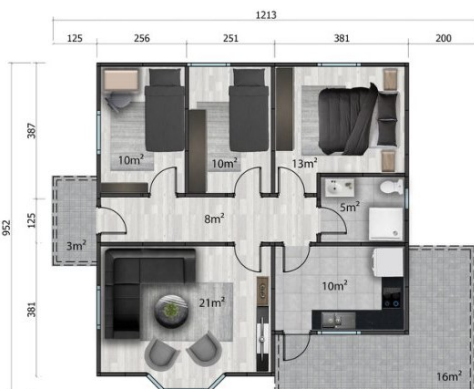




Tek-p  
**93 M<sup>2</sup>**



Tek-p  
**95 M<sup>2</sup>**







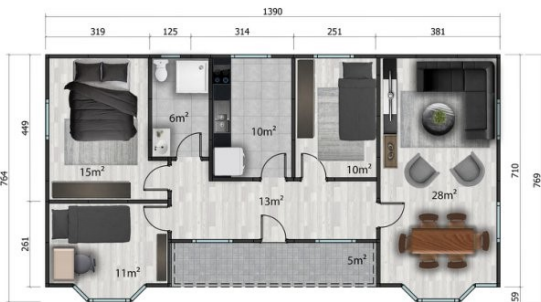
Tek-p  
**95 M<sup>2</sup>**


**Kat planı / Floor plan**

SALON/LIVINGROOM	20M <sup>2</sup>
BANYO / BATHROOM	5M <sup>2</sup>
WC	3M <sup>2</sup>
MUTFAK / KITCHEN	10M <sup>2</sup>
YATAK ODASI/BEDROOM	15M <sup>2</sup>
YATAK ODASI 2 / BEDROOM 2	13M <sup>2</sup>
YATAK ODASI 3 / BEDROOM 3	10M <sup>2</sup>
VERANDA/ PORCH	6M <sup>2</sup>
ANTRE / ENTRANCE	13M <sup>2</sup>



Tek-p  
**98 M<sup>2</sup>**


**Kat planı / Floor plan**

SALON/LIVINGROOM	28M <sup>2</sup>
BANYO / BATHROOM	6M <sup>2</sup>
MUTFAK / KITCHEN	10M <sup>2</sup>
YATAK ODASI/BEDROOM	15M <sup>2</sup>
YATAK ODASI 2 / BEDROOM 2	11M <sup>2</sup>
YATAK ODASI 3 / BEDROOM 3	10M <sup>2</sup>
VERANDA/ PORCH	5M <sup>2</sup>
ANTRE / ENTRANCE	13M <sup>2</sup>







Tek-p  
**100 M<sup>2</sup>**



**Kat planı / Floor plan**

SALON/LIVINGROOM	24M <sup>2</sup>
BANYO / BATHROOM	4M <sup>2</sup>
MUTFAK / KITCHEN	12M <sup>2</sup>
YATAK ODASI/BEDROOM	14M <sup>2</sup>
YATAK ODASI 2 / BEDROOM 2	10M <sup>2</sup>
YATAK ODASI 3 / BEDROOM 3	8M <sup>2</sup>
VERANDA/ PORCH	18M <sup>2</sup>
ANTRE / ENTRANCE	10M <sup>2</sup>



Tek-p  
**101 M<sup>2</sup>**



**Kat planı / Floor plan**

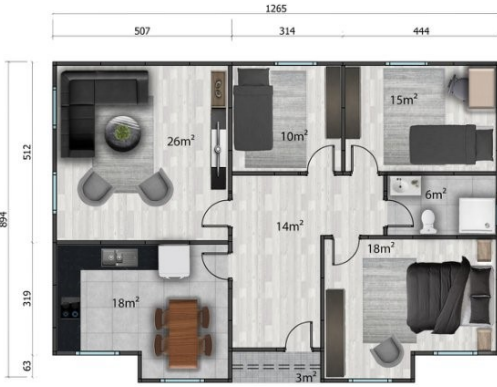
SALON/LIVINGROOM	22M <sup>2</sup>
BANYO / BATHROOM	5M <sup>2</sup>
WC	3M <sup>2</sup>
MUTFAK / KITCHEN	14M <sup>2</sup>
YATAK ODASI/BEDROOM	16M <sup>2</sup>
YATAK ODASI 2 / BEDROOM 2	14M <sup>2</sup>
VERANDA/ PORCH	16M <sup>2</sup>
ANTRE / ENTRANCE	8M <sup>2</sup>







Tek-p  
**110 M<sup>2</sup>**



#### Kat planı / Floor plan

SALON/LIVINGROOM	26M <sup>2</sup>
BANYO / BATHROOM	6M <sup>2</sup>
MUTFAK / KITCHEN	10M <sup>2</sup>
YATAK ODASI/BEDROOM	15M <sup>2</sup>
YATAK ODASI 2 / BEDROOM 2	14M <sup>2</sup>
YATAK ODASI 3 / BEDROOM 3	18M <sup>2</sup>
VERANDA / PORCH	3M <sup>2</sup>
ANTRE / ENTRANCE	14M <sup>2</sup>



Tek-p  
**113 M<sup>2</sup>**



#### Kat planı / Floor plan

SALON/LIVINGROOM	26M <sup>2</sup>
BANYO / BATHROOM	6M <sup>2</sup>
WC	3M <sup>2</sup>
MUTFAK / KITCHEN	13M <sup>2</sup>
YATAK ODASI/BEDROOM	12M <sup>2</sup>
YATAK ODASI 2 / BEDROOM 2	12M <sup>2</sup>
VERANDA / PORCH	5M <sup>2</sup>
ANTRE / ENTRANCE	17M <sup>2</sup>







Tek-p  
**117 M<sup>2</sup>**



**Kat planı / Floor plan**

SALON/LIVINGROOM	35M <sup>2</sup>
BANYO / BATHROOM	5M <sup>2</sup>
WC	3M <sup>2</sup>
MUTFAK / KITCHEN	10M <sup>2</sup>
YATAK ODASI/BEDROOM	15M <sup>2</sup>
YATAK ODASI 2 / BEDROOM 2	13M <sup>2</sup>
YATAK ODASI 3 / BEDROOM 3	11M <sup>2</sup>
VERANDA/ PORCH	13M <sup>2</sup>
ANTRE / ENTRANCE	12M <sup>2</sup>



Tek-p  
**120M<sup>2</sup>**



**Kat planı / Floor plan**

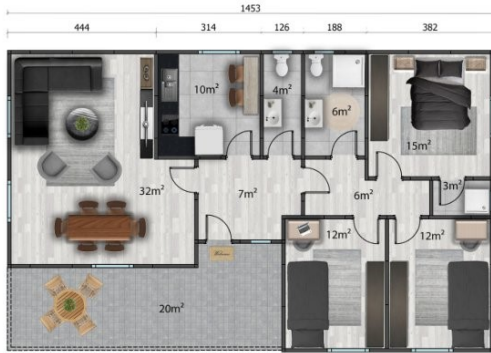
SALON/LIVINGROOM	30M <sup>2</sup>
BANYO / BATHROOM	6M <sup>2</sup>
WC	4M <sup>2</sup>
MUTFAK / KITCHEN	14M <sup>2</sup>
YATAK ODASI/BEDROOM *2	15M <sup>2</sup>
YATAK ODASI 2 / BEDROOM 2	12M <sup>2</sup>
VERANDA/ PORCH	7M <sup>2</sup>
ANTRE / ENTRANCE	14M <sup>2</sup>



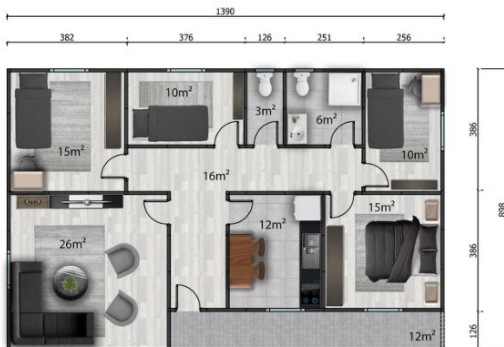




Tek-p  
**123 M<sup>2</sup>**



Tek-p  
**125 M<sup>2</sup>**







Tek-p  
**129 M<sup>2</sup>**



**Kat planı / Floor plan**

SALON/LIVINGROOM	29M <sup>2</sup>
BANYO / BATHROOM	8M <sup>2</sup>
WC*2	3M <sup>2</sup>
MUTFAK / KITCHEN	10M <sup>2</sup>
YATAK ODASI/BEDROOM	17M <sup>2</sup>
YATAK ODASI 2 / BEDROOM 2	14M <sup>2</sup>
YATAK ODASI 3 / BEDROOM 3	12M <sup>2</sup>
ANTRE / ENTRANCE	17M <sup>2</sup>



Tek-p  
**166 M<sup>2</sup>**



**Kat planı / Floor plan**

SALON/LIVINGROOM	38M <sup>2</sup>
BANYO / BATHROOM	7M <sup>2</sup>
WC	3M <sup>2</sup>
WC	5M <sup>2</sup>
MUTFAK / KITCHEN	14M <sup>2</sup>
YATAK ODASI/BEDROOM	20M <sup>2</sup>
YATAK ODASI 2 / BEDROOM 2	17M <sup>2</sup>
YATAK ODASI 3 / BEDROOM 3	12M <sup>2</sup>
VERANDA / PORCH	19M <sup>2</sup>
ANTRE / ENTRANCE	19M <sup>2</sup>







Tek-p  
**82 M<sup>2</sup>**



Zemin kat planı/ Ground floor plan

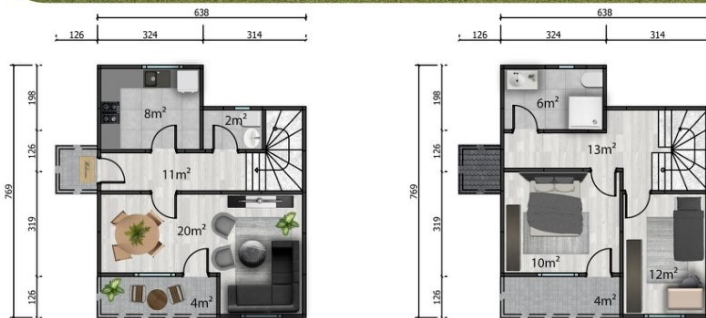
SALON/LIVINGROOM	10m <sup>2</sup>
BANYO / BATHROOM	3m <sup>2</sup>
MUTFAK / KITCHEN	3m <sup>2</sup>
GİRİŞ / ENTRANCE	3m <sup>2</sup>
ANTRE / ENTRANCE	10m <sup>2</sup>

1. kat planı / First floor plan

YATAK ODASI / BEDROOM	15m <sup>2</sup>
YATAK ODASI 2/ BEDROOM 2	10m <sup>2</sup>
BANYO / BATHROOM	5m <sup>2</sup>
ANTRE / ENTRANCE	8m <sup>2</sup>



Tek-p  
**92 M<sup>2</sup>**



Zemin kat planı/ Ground floor plan

SALON/LIVINGROOM	20m <sup>2</sup>
BANYO / BATHROOM	2m <sup>2</sup>
MUTFAK / KITCHEN	8m <sup>2</sup>
ANTRE / ENTRANCE	11m <sup>2</sup>

1. kat planı / First floor plan

YATAK ODASI / BEDROOM	12m <sup>2</sup>
YATAK ODASI 2/ BEDROOM 2	10m <sup>2</sup>
BANYO / BATHROOM	6m <sup>2</sup>
ANTRE / ENTRANCE	13m <sup>2</sup>







Tek-p  
**100 M<sup>2</sup>**



Zemin kat planı/ Ground floor plan

SALON/LIVINGROOM	30M <sup>2</sup>
BANYO / BATHROOM	3M <sup>2</sup>
VERANDA / PORCH	7M <sup>2</sup>
ANTRE / ENTRANCE	12M <sup>2</sup>

1. kat planı / First floor plan

YATAK ODASI / BEDROOM	15M <sup>2</sup>
YATAK ODASI 2/ BEDROOM 2	15M <sup>2</sup>
BANYO / BATHROOM	3M <sup>2</sup>
ANTRE / ENTRANCE	10M <sup>2</sup>
BALKON / BALCONY	3M <sup>2</sup>



Tek-p  
**101 M<sup>2</sup>**



Zemin kat planı/ Ground floor plan

SALON/LIVINGROOM	20M <sup>2</sup>
MUTFAK / KITCHEN	7M <sup>2</sup>
VERANDA / PORCH	15M <sup>2</sup>
YATAK ODASI / BEDROOM	10M <sup>2</sup>

1. kat planı / First floor plan

YATAK ODASI / BEDROOM	20M <sup>2</sup>
YATAK ODASI 2/ BEDROOM 2	10M <sup>2</sup>
BANYO / BATHROOM	7M <sup>2</sup>





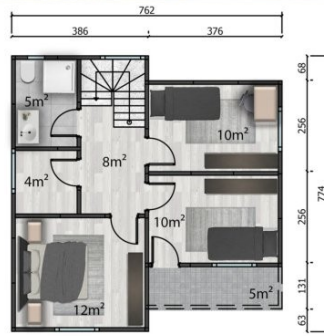


Tek-p

105 M<sup>2</sup>

Zemin kat planı/ Ground floor plan

SALON/LIVINGROOM	18M <sup>2</sup>
BANYO / BATHROOM	5M <sup>2</sup>
MUTFAK / KITCHEN	12M <sup>2</sup>
GİRİŞ / ENTRANCE	5M <sup>2</sup>
ANTRE / ENTRANCE	12M <sup>2</sup>



1. kat planı / First floor plan

YATAK ODASI / BEDROOM *2	10M <sup>2</sup>
YATAK ODASI 2/ BEDROOM 2	12M <sup>2</sup>
BANYO / BATHROOM	5M <sup>2</sup>
ANTRE / ENTRANCE	8M <sup>2</sup>
BALKON / BALCONY	5M <sup>2</sup>



Tek-p

114 M<sup>2</sup>

Zemin kat planı/ Ground floor plan

SALON/LIVINGROOM	24M <sup>2</sup>
BANYO / BATHROOM	2M <sup>2</sup>
MUTFAK / KITCHEN	10M <sup>2</sup>
ANTRE / ENTRANCE	11M <sup>2</sup>
VERANDA / PORCH	7M <sup>2</sup>



1. kat planı / First floor plan

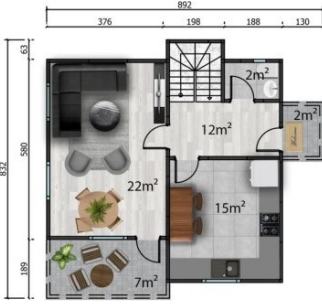
YATAK ODASI / BEDROOM *2	10M <sup>2</sup>
YATAK ODASI 2/ BEDROOM 2	15M <sup>2</sup>
BANYO / BATHROOM	6M <sup>2</sup>
ANTRE / ENTRANCE	15M <sup>2</sup>
BALKON / BALCONY	7M <sup>2</sup>





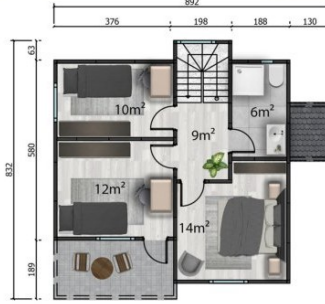


Tek-p  
**118 M<sup>2</sup>**



Zemin kat planı/ Ground floor plan

SALON/LIVINGROOM	22M <sup>2</sup>
BANYO / BATHROOM	2M <sup>2</sup>
MUTFAK / KITCHEN	15M <sup>2</sup>
GİRİŞ / ENTRANCE	12M <sup>2</sup>
ANTRE / ENTRANCE	12M <sup>2</sup>
VERAND / PORCH	7M <sup>2</sup>



1. kat planı / First floor plan

YATAK ODASI / BEDROOM	10M <sup>2</sup>
YATAK ODASI 2/ BEDROOM 2	12M <sup>2</sup>
YATAK ODASI 3/ BEDROOM 3	14M <sup>2</sup>
BANYO / BATHROOM	6M <sup>2</sup>
ANTRE / ENTRANCE	9M <sup>2</sup>



Tek-p  
**124M<sup>2</sup>**



Zemin kat planı/ Ground floor plan

SALON/LIVINGROOM	24M <sup>2</sup>
BANYO / BATHROOM	5M <sup>2</sup>
MUTFAK / KITCHEN	16M <sup>2</sup>
ANTRE / ENTRANCE	11M <sup>2</sup>
VERAND / PORCH	16M <sup>2</sup>



1. kat planı / First floor plan

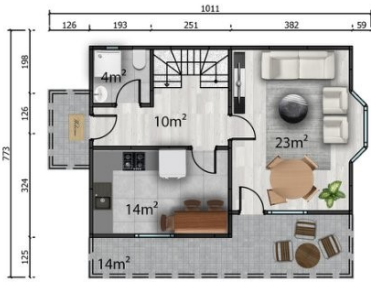
YATAK ODASI / BEDROOM *2	10M <sup>2</sup>
YATAK ODASI 2/ BEDROOM 2	14M <sup>2</sup>
BANYO / BATHROOM	5M <sup>2</sup>
ANTRE / ENTRANCE	11M <sup>2</sup>
BALKON/ BALCONY	5M <sup>2</sup>





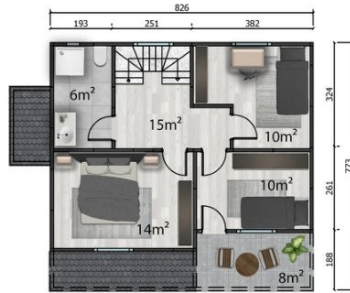


Tek-p

126 M<sup>2</sup>

Zemin kat planı / Ground floor plan

SALON/LIVINGROOM	23M <sup>2</sup>
BANYO / BATHROOM	4M <sup>2</sup>
MUTFAK / KITCHEN	14M <sup>2</sup>
ANTRE / ENTRANCE	10M <sup>2</sup>
VERANDA / PORCH	14M <sup>2</sup>

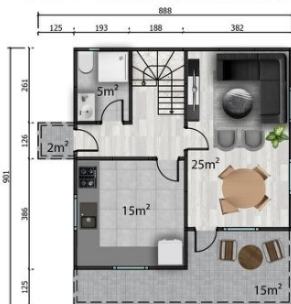


1. kat planı / First floor plan

YATAK ODASI / BEDROOM *2	10M <sup>2</sup>
YATAK ODASI 2 / BEDROOM 2	14M <sup>2</sup>
BANYO / BATHROOM	6M <sup>2</sup>
ANTRE / ENTRANCE	15M <sup>2</sup>
BALKON / BALCONY	8M <sup>2</sup>

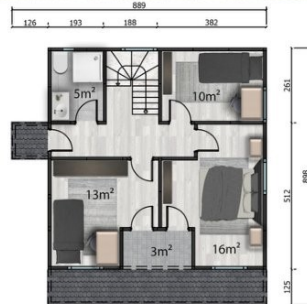


Tek-p

131 M<sup>2</sup>

Zemin kat planı / Ground floor plan

SALON/LIVINGROOM	25M <sup>2</sup>
BANYO / BATHROOM	5M <sup>2</sup>
MUTFAK / KITCHEN	15M <sup>2</sup>
VERANDA / PORCH	15M <sup>2</sup>



1. kat planı / First floor plan

YATAK ODASI / BEDROOM	10M <sup>2</sup>
YATAK ODASI 2 / BEDROOM 2	16M <sup>2</sup>
YATAK ODASI 3 / BEDROOM 3	13M <sup>2</sup>
BANYO / BATHROOM	5M <sup>2</sup>
BALKON / BALCONY	3M <sup>2</sup>







Tek-p  
**134 M<sup>2</sup>**

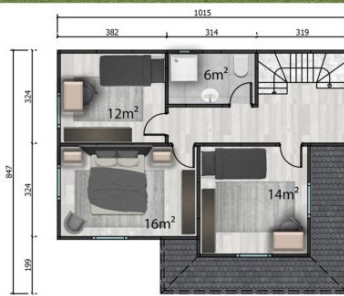


**Zemin kat planı/ Ground floor plan**  
SALON/LIVINGROOM 16M<sup>2</sup>  
BANYO / BATHROOM 8M<sup>2</sup>  
MUTFAK / KITCHEN 14M<sup>2</sup>  
VERANDA / PORCH 5M<sup>2</sup>  
YATAK ODASI / BEDROOM 5M<sup>2</sup>

**1. kat planı / First floor plan**  
YATAK ODASI / BEDROOM 16M<sup>2</sup>  
YATAK ODASI 2/ BEDROOM 2 22M<sup>2</sup>  
BALKON/ BALCONY 5M<sup>2</sup>



Tek-p  
**142M<sup>2</sup>**



**Zemin kat planı/ Ground floor plan**  
SALON/LIVINGROOM 18M<sup>2</sup>  
BANYO / BATHROOM 4M<sup>2</sup>  
MUTFAK / KITCHEN 10M<sup>2</sup>  
VERANDA / PORCH 14M<sup>2</sup>  
YATAK ODASI / BEDROOM 12M<sup>2</sup>

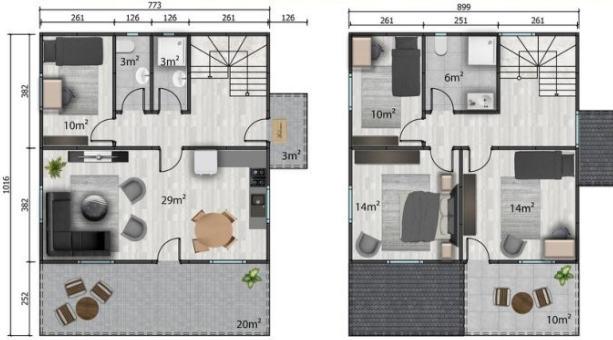
**1. kat planı / First floor plan**  
YATAK ODASI / BEDROOM 12M<sup>2</sup>  
YATAK ODASI 2/ BEDROOM 2 14M<sup>2</sup>  
YATAK ODASI 3/ BEDROOM 3 16M<sup>2</sup>  
BANYO / BATHROOM 6M<sup>2</sup>







Tek-p  
**149 M<sup>2</sup>**



Zemin kat planı/ Ground floor plan

SALON/LIVINGROOM	29M <sup>2</sup>
BANYO / BATHROOM*2	3M <sup>2</sup>
GİRİŞ / ENTRANCE	3M <sup>2</sup>
VERANDA / PORCH	20M <sup>2</sup>
YATAK ODASI / BEDROOM	10M <sup>2</sup>

1. kat planı / First floor plan

YATAK ODASI / BEDROOM *2	14M <sup>2</sup>
YATAK ODASI 2/ BEDROOM 2	10M <sup>2</sup>
BANYO / BATHROOM	6M <sup>2</sup>
BALKON/ BALCONY	10M <sup>2</sup>



Tek-p  
**150 M<sup>2</sup>**



Zemin kat planı/ Ground floor plan

SALON/LIVINGROOM	33M <sup>2</sup>
BANYO / BATHROOM	6M <sup>2</sup>
GİRİŞ / ENTRANCE	4M <sup>2</sup>
VERANDA / PORCH	7M <sup>2</sup>
YATAK ODASI / BEDROOM	10M <sup>2</sup>
ANTRE / ENTRANCE	15M <sup>2</sup>

1. kat planı / First floor plan

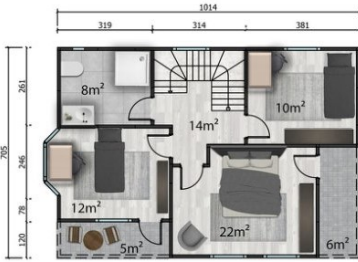
YATAK ODASI / BEDROOM	22M <sup>2</sup>
YATAK ODASI 2/ BEDROOM 2	15M <sup>2</sup>
YATAK ODASI 3 / BEDROOM 3	10M <sup>2</sup>
BANYO / BATHROOM	6M <sup>2</sup>
BALKON/ BALCONY	7M <sup>2</sup>
ANTRE / ENTRANCE	15M <sup>2</sup>







Tek-p  
**155 M<sup>2</sup>**



1. kat planı / First floor plan

YATAK ODASI / BEDROOM	22M <sup>2</sup>
YATAK ODASI 2/ BEDROOM 2	12M <sup>2</sup>
YATAK ODASI 3/ BEDROOM 3	10M <sup>2</sup>
BANYO / BATHROOM	8M <sup>2</sup>
ANTRE / ENTRANCE	14M <sup>2</sup>
BALKON/ BALCONY 1	5M <sup>2</sup>
BALKON/ BALCONY 2	6M <sup>2</sup>



Zemin kat planı/ Ground floor plan

SALON/LIVINGROOM	35M <sup>2</sup>
BANYO / BATHROOM	4M <sup>2</sup>
WC	3M <sup>2</sup>
MUTFAK / KITCHEN	13M <sup>2</sup>
ANTRE / ENTRANCE	17M <sup>2</sup>
VERANDA / PORCH	5M <sup>2</sup>

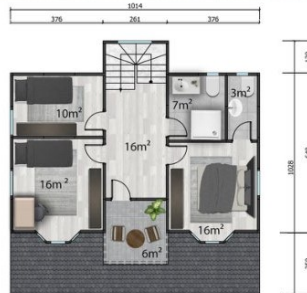


Tek-p  
**169 M<sup>2</sup>**



Zemin kat planı/ Ground floor plan

SALON/LIVINGROOM	24M <sup>2</sup>
BANYO / BATHROOM	6M <sup>2</sup>
VERANDA / PORCH	29M <sup>2</sup>
ANTRE / ENTRANCE	21M <sup>2</sup>
MUTFAK / KITCHEN	15M <sup>2</sup>



1. kat planı / First floor plan

YATAK ODASI / BEDROOM	10M <sup>2</sup>
YATAK ODASI 2/ BEDROOM 2	16M <sup>2</sup>
BANYO / BATHROOM	7M <sup>2</sup>
WC	3M <sup>2</sup>
BALKON/ BALCONY	6M <sup>2</sup>
ANTRE / ENTRANCE	13M <sup>2</sup>





## Prefabrik Yapı Teknik Detaylar

### BETOPAN DIŞ DUVAR PANEL 100 mm

- Dış Kaplama: 8 mm Düz Çimento Yonga Levha (CE Belgeli Betopan- fibercement)
- Yalıtım: 80mm kalınlığında Polistren Köpük (EPS) Yangın Sınıfı B1
- İç Kaplama: 8 mm Düz Çimento Yonga Levha (CE Belgeli Betopan- Fibercement)
- Panel Birleşim Sistemi: Galvaniz Sac Malzemededen Rollform Makinasında Şekillendirilen H ve U profillerden Oluşturulur .
- Opsiyonel: Karkaslı Panel
- Opsiyonel Yalıtım: 80 mm kalınlığında Taşyünü Yangın Sınıfı A1

### BETOPAN İÇ DUVAR PANEL 100 mm

- Dış Kaplama: 8 mm Düz Çimento Yonga Levha (CE Belgeli Betopan- fibercement)
- Yalıtım: 40mm kalınlığında Polistren Köpük (EPS) Yangın Sınıfı B1
- İç Kaplama: 8 mm Düz Çimento Yonga Levha (CE Belgeli Betopan- Fibercement)
- Panel Birleşim Sistemi: Galvaniz Sac Malzemededen Rollform Makinasında Şekillendirilen H ve U profillerden Oluşturulur .
- Opsiyonel: Karkaslı Panel
- Opsiyonel Yalıtım: 40 mm kalınlığında Taşyünü Yangın Sınıfı A1

### BETOPAN DIŞ DUVAR PANEL 100 mm (FUGALI)

- Dış Kaplama: 10 mm Fugalı Çimento Yonga Levha (CE Belgeli Betopan- fibercement)
- Yalıtım: 80mm kalınlığında Polistren Köpük (EPS) Yangın Sınıfı B1
- İç Kaplama: 8 mm Düz Çimento Yonga Levha (CE Belgeli Betopan- Fibercement)
- Panel Birleşim Sistemi: Galvaniz Sac Malzemededen Rollform Makinasında Şekillendirilen H ve U profillerden Oluşturulur .
- Opsiyonel: Karkaslı Panel
- Opsiyonel Yalıtım: 80 mm kalınlığında Taşyünü Yangın Sınıfı A1

### ARAKAT KONSTRÜKSİYON

- Karkas: Özel Bükümlü Galvaniz Sacdan Elde Edilen Kafes Şeklindeki Panellerin Birbirleriyle Birleştirilmesinden Oluşturulur
- Üst Kaplama: 16 mm Kalınlığında Çimento Yonga Levha (CE Belgeli Betopan -Fibercement)
- Alt Kaplama: 12 mm Kalınlığında Alçı Levha ( Alçıpan) Üstünde 80 mm kalınlığında camyünü yalıtımı "

### ÇATI

- Çatı Kaplaması: 27/200 Formunda 0,50 mm kalınlığında trapez kesitli boyalı galvaniz sac kullanılır.
- Opsiyonel: Metal Kremit, Shingle ve Sandviç Panel Kullanılır
- Çatı Makasları: 125 cm ara ile yüksek standartta galvaniz rulo sacdan üretilmiş özel tasarım makas dış ve iç profilli çelik ma
- Saçaklar: 20 cm özel büküm galvaniz sacdan saçak vardır.
- Dere: Pvc ya da galvaniz sac dere uygulaması isteğe bağlı yapılabilmektedir"

### TAVAN

- Tavan Kaplaması: 12 mm Kalınlığında Alçı Levha (Alçıpan)
- Tavan Yalıtımı: 80mm Kalınlığında Rulo Camyünü
- Opsiyonel: Alçıpan Ters Tavan

### KAPI

- Dış Kapı: Çelik Kapı
- İç Kapı: Amerikan Panel Kapı

### ELEKTRİK TESİSATI

- Armatürler: Aydınlatma Armatürleri, Anahtarlar, Prizler, Sigortalar Sigorta Kutuları
- Kabloleme: Priz sortileri 3X2.5 mm<sup>2</sup> NYM, Aydınlatma sortileri 2X1.5 mm<sup>2</sup> NYM,
- Uygulama: Siva Altı veya Siva Üstü

### PENCERE

- Pencere: PVC Pencere
- Camlar: 4+12+4 Isı cam"



#### SIHHİ TESİSAT

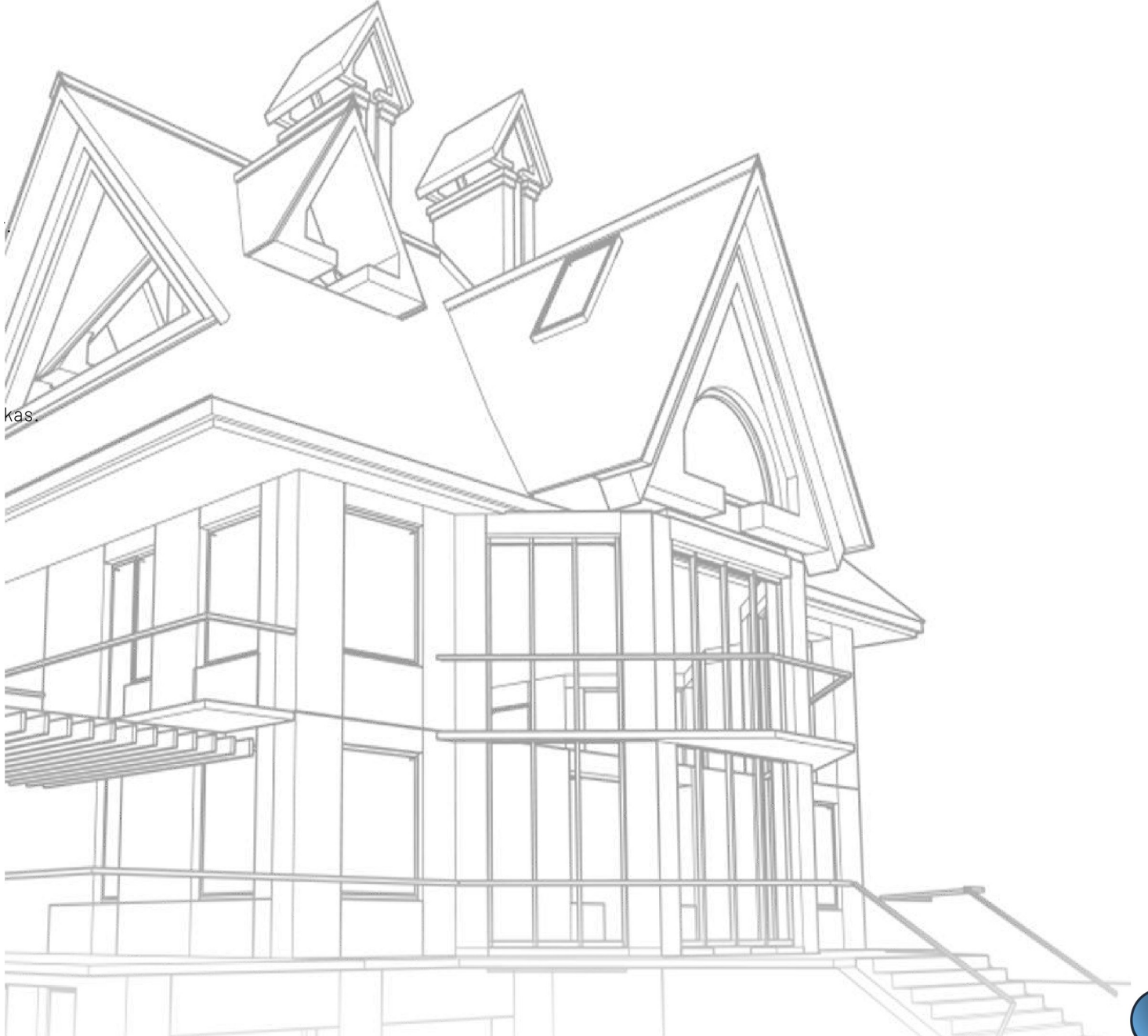
- Vitrifiye / Armatürler: Lavabolar , Lavanbo ve Banyo Muslukları, Wc Taşı , Duş Teknesi
- Temiz Su Ve Pis Su Borulama: PPRC ve PVC borular kullanılır
- Uygulama: Sıva Altı veya Sıva Üstü

#### BOYA

- Dış Cephe: Çift Kat Silikonlu boya
- Metal Aksam: Standart çift kat yağlı boya
- Tavan: Çift kat plastik boya

#### MERDİVEN

- Karkas : Kutu Profillerden Elde edilen iskelet üzeri Betopan Kaplama Kullanılır.





## Technical details of prefabricated structures

### BETOPAN EXTERNAL WALL PANEL

- 100 mm External Cladding: 8 mm Smooth Cement Chipboard (CE Certified Betopan - fibercement)
- Insulation: 80 mm thick Polystyrene Foam (EPS) Fire Class B1
- Internal Cladding: 8 mm Smooth Cement Chipboard (CE Certified Betopan - Fibercement)
- Panel Joint System: Formed from H and U profiles made of Galvanized Sheet Material on a Roll Forming Machine.
- Optional: Framed Panel
- Optional Insulation: 80 mm thick Stone Wool Fire Class A1

### BETOPAN INTERNAL WALL PANEL 100 mm

- External Cladding: 8 mm Smooth Cement Chipboard (CE Certified Betopan - fibercement)
- Insulation: 40 mm thick Polystyrene Foam (EPS) Fire Class B1
- Internal Cladding: 8 mm Smooth Cement Chipboard (CE Certified Betopan - Fibercement)
- Panel Joint System: Formed from H and U profiles made of Galvanized Sheet Material on a Roll Forming Machine.
- Optional: Framed Panel
- Optional Insulation: 40 mm thick Stone Wool Fire Class A1

### BETOPAN EXTERNAL WALL PANEL 100 mm (GROOVED)

- External Cladding: 10 mm Grooved Cement Chipboard (CE Certified Betopan - fibercement)
- Insulation: 80 mm thick Polystyrene Foam (EPS) Fire Class B1
- Internal Cladding: 8 mm Smooth Cement Chipboard (CE Certified Betopan - Fibercement)
- Panel Joint System: Formed from H and U profiles made of Galvanized Sheet Material on a Roll Forming Machine.
- Optional: Framed Panel
- Optional Insulation: 80 mm thick Stone Wool Fire Class A1

### CONSTRUCTION

- Framework: Consists of interconnected panels made from Special Bended Galvanized Sheet.
- Top Covering: 16 mm Thick Cement Chipboard (CE Certified Betopan - Fibercement)
- Bottom Covering: 12 mm Thick Plasterboard (Drywall) with 80 mm thickness glass wool insulation

### ROOF

- Roof Covering: Painted galvanized sheet with trapezoidal section, 0.50 mm thickness, in the form of 27/200.
- Optional: Metal Tiles, Shingles, and Sandwich Panels can be used.
- Roof Trusses: High-standard trusses with a design made of galvanized roll sheet, with outer and inner profiled steel trusses, spaced at 125 cm intervals.
- Eaves: There are 20 cm eaves made of specially bent galvanized sheet.
- Gutter: Optional application of PVC or galvanized sheet gutters is possible.

### CEILING

- Ceiling Covering: 12 mm Thick Plasterboard (Drywall)
- Ceiling Insulation: 80 mm Thick Roll Glass Wool
- Optional: Suspended Ceiling with Plasterboard

### DOOR

- Exterior Door: Steel Door
- Interior Door: American Panel Door

### ELECTRICAL INSTALLATION

- Fixtures: Lighting Fixtures, Switches, Outlets, Circuit Breakers, Distribution Boxes
- Wiring: Power outlet circuits use 3X2.5 mm<sup>2</sup> NYM cables, Lighting circuits use 2X1.5 mm<sup>2</sup> NYM cables.
- Implementation: Concealed (under plaster) or Surface-mounted (above plaster) installation.

### WINDOW

- Window: PVC Window
- Glass: 4+12+4 Insulated Glass



#### PLUMBING INSTALLATION

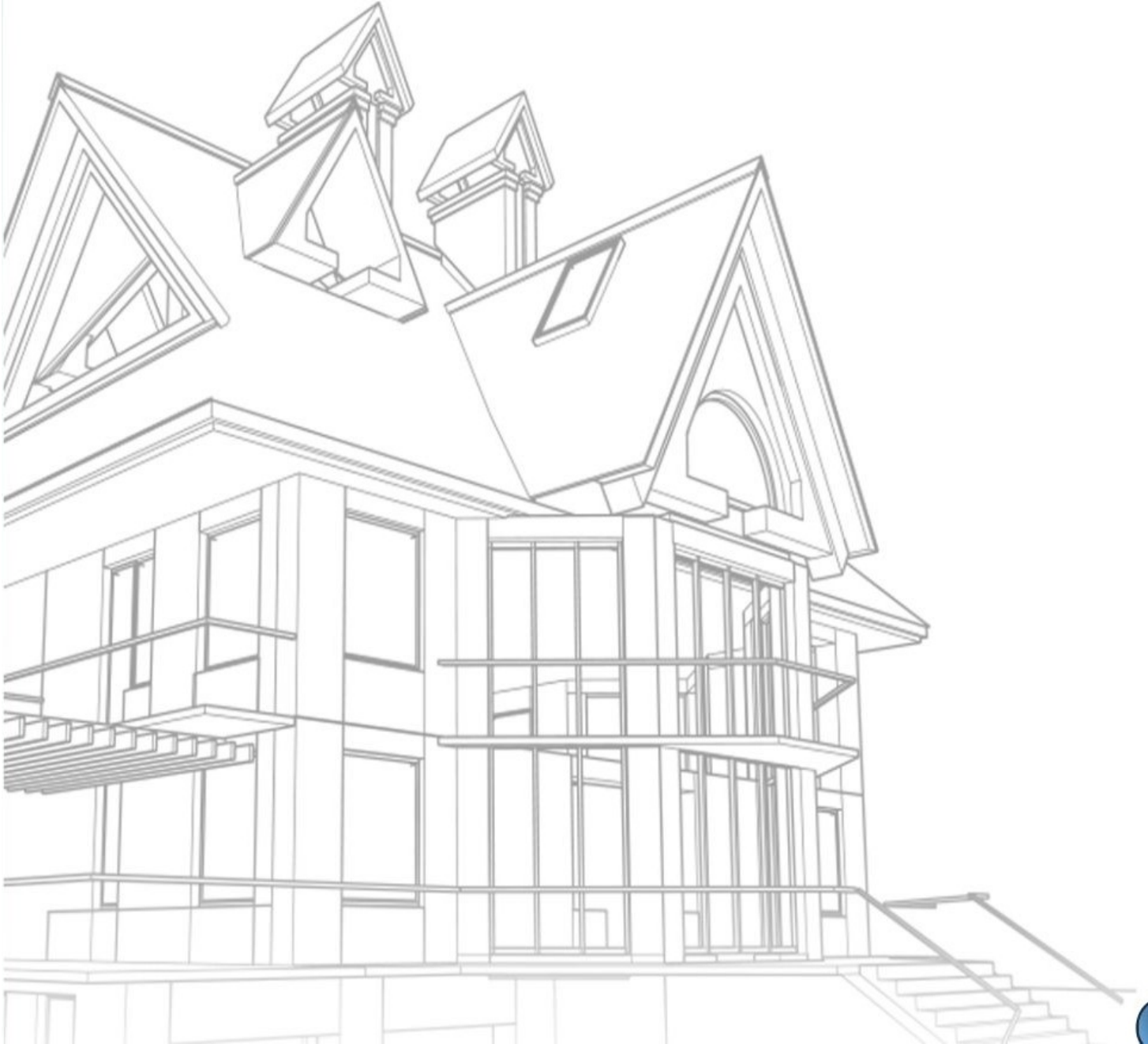
- Sanitary Fixtures/Fittings: Sinks, Bathroom and Kitchen Faucets, Toilet Bowls, Shower Trays
- Potable Water and Waste Water Piping: PPRC and PVC pipes are used.
- Implementation: Concealed (under plaster) or Surface-mounted (above plaster) installation.

#### PAINT

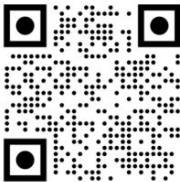
- Exterior Facade: Double Coated Silicone Paint
- Metal Components: Standard Double Coated Oil Paint
- Ceiling: Double Coated Plastic Paint

#### STAIRCASE

- Framework: Box profiles are used to create the skeleton structure, which is then covered with Betopan.







+90 545 191 34 34



info@tekprefabrik.com



tekprefabrik



tek.prefabrik



Aydıntepe Mah. Akyıldız Çıkmazı  
E5 Yanyol No: 10  
İçmeler / Tuzla / İstanbul / Türkiye