



# TEK PREFABRİK

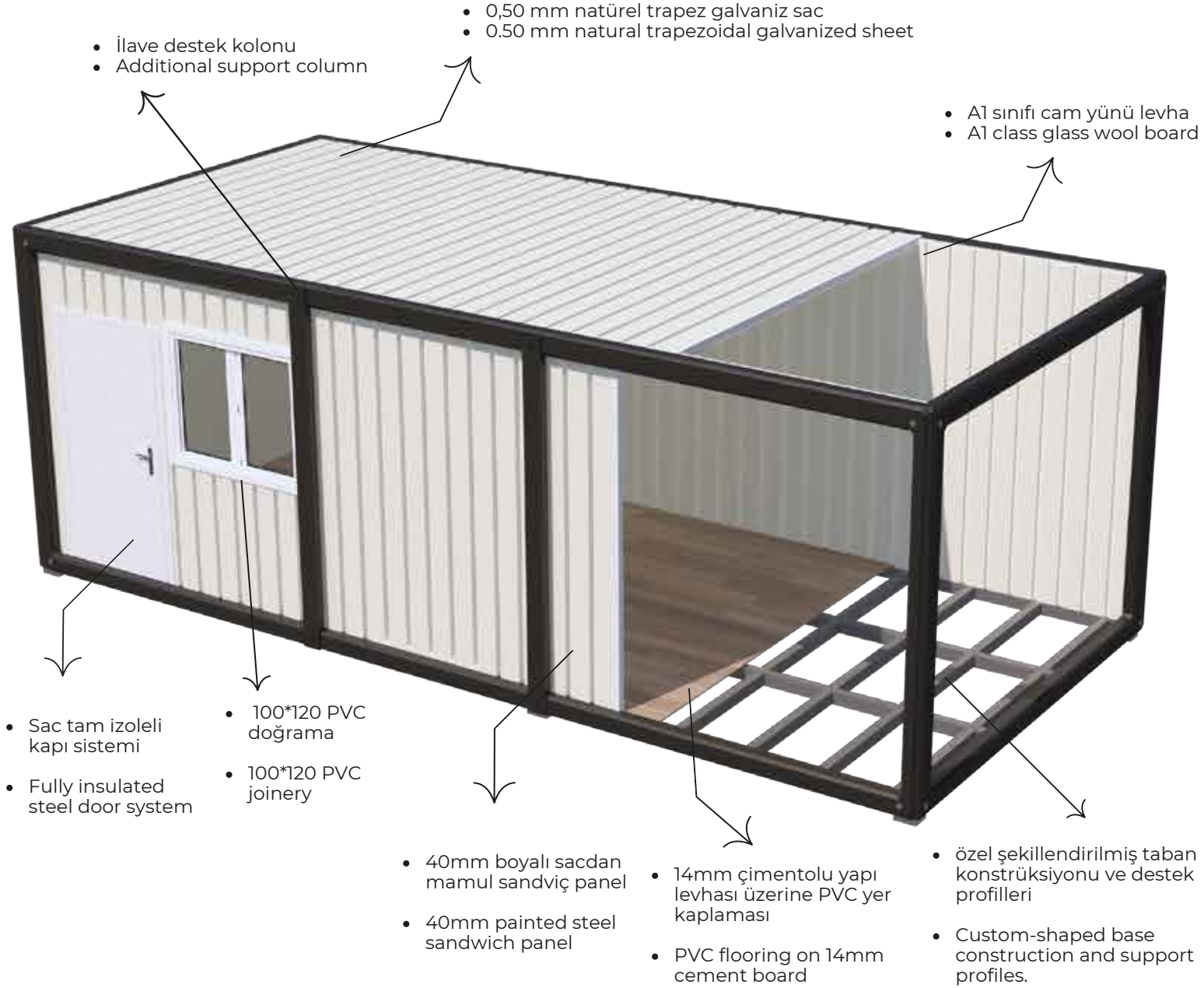
Prefabrik, elik ev ve Konteyner

WWW.TEKPREFABRİK.COM

## 2023

### KONTEYNER KATALOĐU CONTAINER CATALOG

Kaliteli yařam iin kaliteli seim...

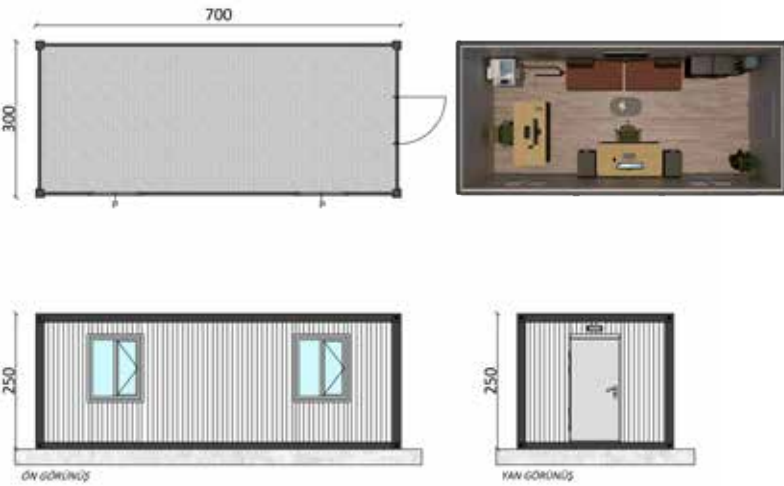
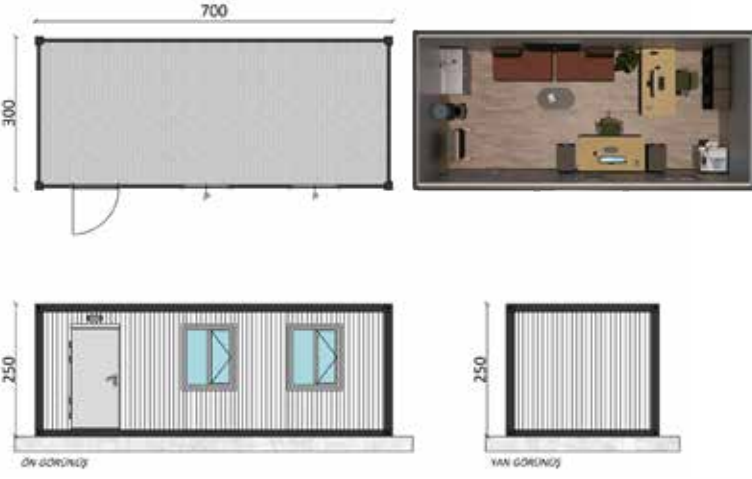


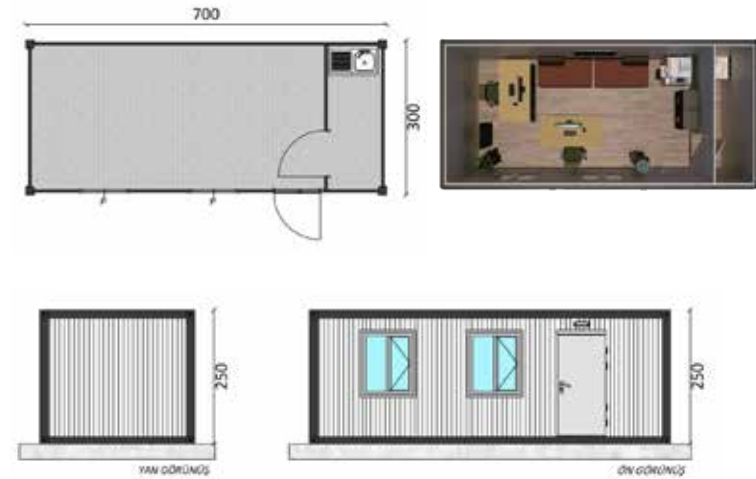
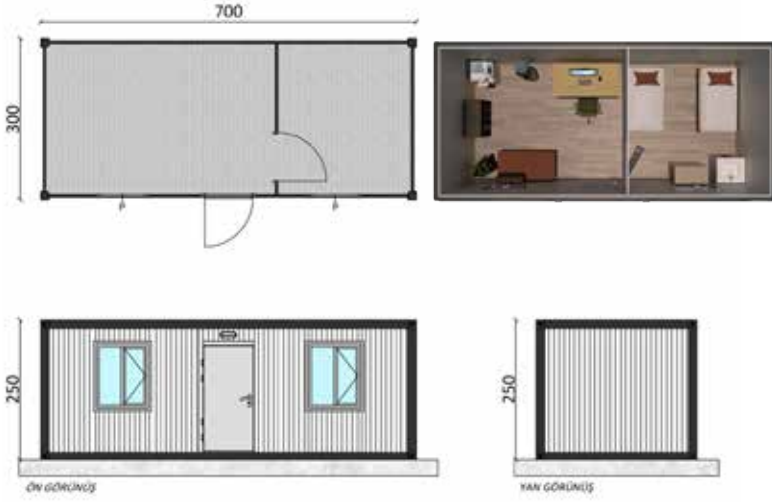
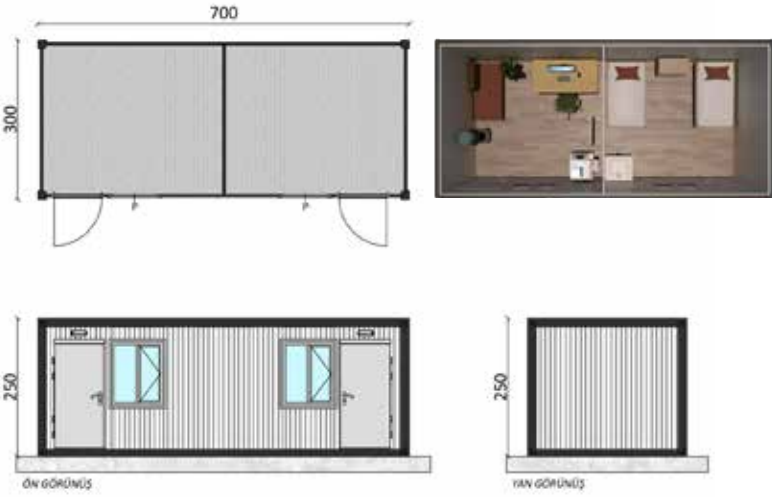


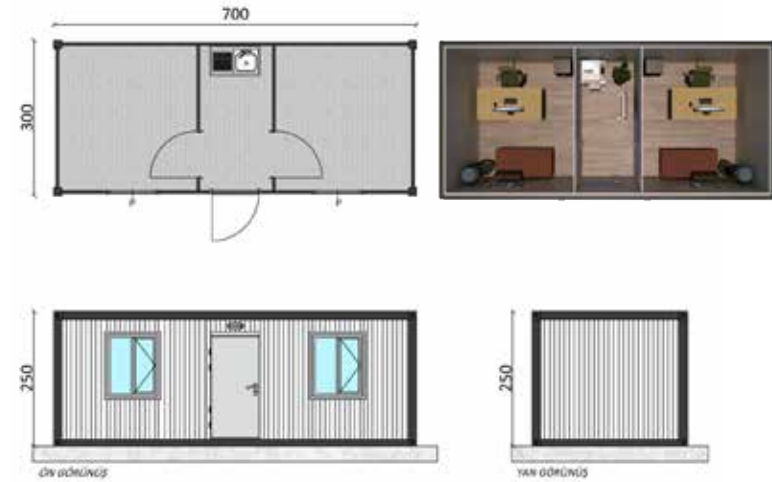
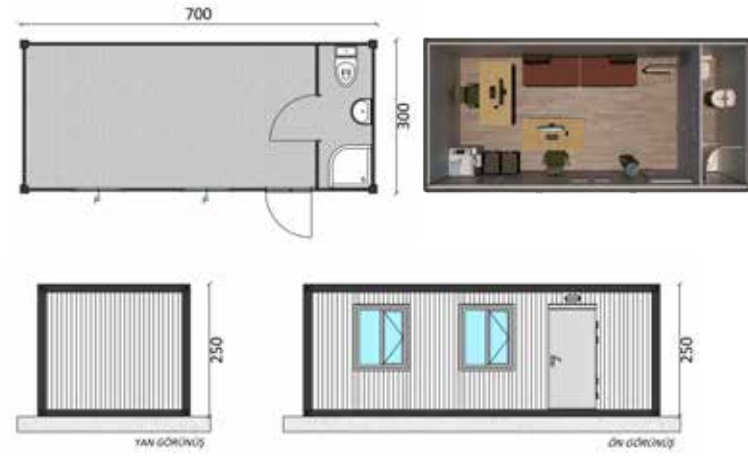
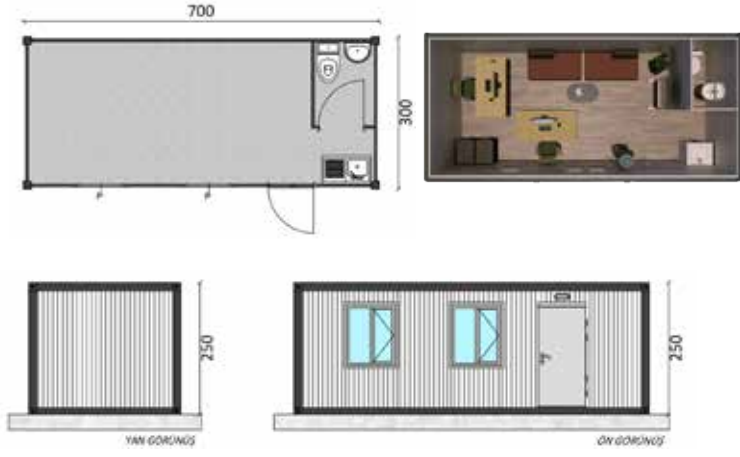
<b>GENEL SİSTEM TANIMI</b>	Konteyner ana gövdesi, özel şekillendirilmiş sacdan imal konstrüksiyon ve taşıyıcı profillerin kaynak vasıtası ile birleştirilmesi ile oluşturulur. Şase 1,5mm, köşe direkleri 12cm*1,5 mm, profil 40*80*1,5mm,30*40*1,5mm çift sıra kayıt	
<b>DIŞ DUVARLAR</b>	<b>Duvar Panelleri</b>	40 mm kalınlığında boyalı sacdan mamul sandviç panel
<b>Yükseklik: 250 cm</b>	<b>Yalıtım</b>	40 mm, 16 dansite yoğunluğunda <b>EPS</b>
<b>Opsiyonel Özellikleri</b>	DİKMELER 40*80*1,5 MM	
<b>İÇ DUVARLAR</b>	<b>Duvar Panelleri</b>	40 mm kalınlığında boyalı sacdan mamul sandviç panel
<b>Yükseklik: 235 cm</b>	<b>Yalıtım</b>	40 mm, 16 dansite yoğunluğunda <b>EPS</b>
<b>Opsiyonel Özellikleri</b>		
<b>TABAN</b>	<b>Sistem</b>	Özel şekillendirilmiş taban konstrüksiyonu ve destek profilleri
	<b>Taban kaplaması</b>	14 mm çimentolu yapı levhası üzerine PVC yer kaplaması kullanılmaktadır.
<b>ÇATI</b>	<b>Çatı Sistemi</b>	Özel şekillendirilmiş tek parça profiller yardımıyla karkaslı olarak yapılır. Hafif eğimli düz çatıdır.
	<b>Çatı Üstü Kaplaması</b>	0,50 mm kalınlıkta Natürel Trapez Galvaniz Sac
	<b>Yalıtım</b>	A1 yanmazlık sınıfı cam yünü levhalar
<b>TAVAN</b>	Tavan kaplamalarında PVC lambri kullanılmaktadır.	
<b>KAPILAR</b>	<b>Dış Kapı</b>	Sac kapıdır.
	<b>İç Kapı</b>	İç kapılar ahşap kapıdır.
<b>PENCERELER</b>	<b>Pencere</b>	100*120 PVC penceredir.
	<b>Cam</b>	Isı cam kullanılmamaktadır.
<b>BOYALAR</b>	<b>Cephe Panelleri</b>	RAL 9002 kodlu fırın boyalı sac
	<b>Köşe Kolonları</b>	Standart yağlı boya
<b>ELEKTRİK TESİSATI</b>	<b>Sistem</b>	Sıva üstü
	<b>Malzemeler</b>	Elektrik tesisatı, sigortalar, sigorta kutuları, armatürler, priz ve anahtarlar dâhildir.
<b>SIHHİ TESİSAT</b>	<b>Sistem</b>	Sıva üstü
	<b>Malzemeler</b>	Wc-Duşlu konteynerlerde lavabolar musluklar, wc taşları ve duş tekneleri dâhildir.
<b>YAĞMUR TAHLİYE SİSTEMİ</b>		Köşe kolonları içindeki gizli dereler ile tahliye yapılmaktadır.

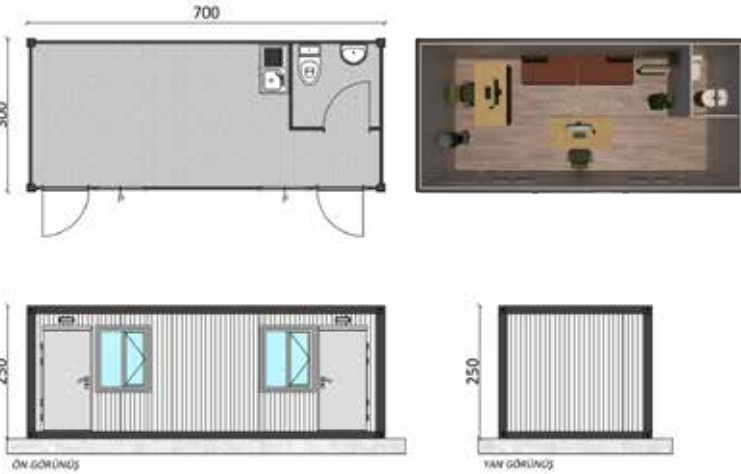
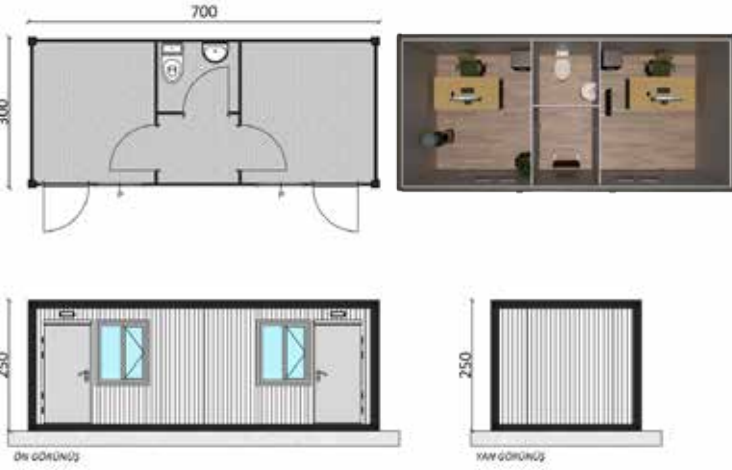
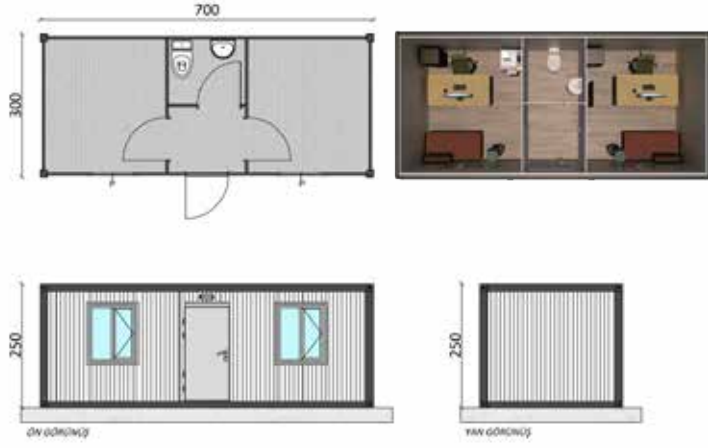


<b>GENERAL SYSTEM DESCRIPTION</b>	The main body of the container is created by combining custom-shaped steel structures and supporting profiles through welding. The chassis is made of 1.5mm thick steel, the corner posts are 12cm1.5mm, and the profiles are 40801.5mm and 3040*1.5mm with double row grooves.	
<b>THE EXTERNAL WALLS</b>	<b>Wall panels</b>	40mm thick sandwich panel made of painted steel
Height: 250 cm	<b>Insulation</b>	40mm EPS (Expanded Polystyrene) with a density of 16
<b>Optional features</b>	PILLAR 40*80*1,5 MM	
<b>THE İTERNAL WALLS</b>	<b>Wall panels</b>	40mm thick sandwich panel made of painted steel
height: 235 cm	<b>Insulation</b>	40mm EPS (Expanded Polystyrene) with a density of 16
<b>Optional features</b>		
<b>THE FLOOR</b>	<b>system</b>	Special-shaped base construction and support profiles
	<b>Flooring</b>	PVC flooring is used on a 14mm cement board
<b>ROOF</b>	<b>Roofing system</b>	It is constructed as a framed structure using specially shaped single-piece profiles. It features a slightly sloped flat roof design.
	<b>Roof covering</b>	0.50 mm thickness Natural Trapezoidal Galvanized Sheet
	<b>Insulation</b>	A1 fire-resistant class glass wool boards
<b>THE CEILING</b>	PVC panels are used for ceiling coverings	
<b>DOORS</b>	<b>Exterior door</b>	Metal door.
	<b>Interior door</b>	The interior doors are wooden doors.
<b>WINDOWS</b>	<b>Window</b>	100*120 PVC .
	<b>Glass</b>	No thermal insulation glass is used.
<b>PAINTS</b>	<b>Facade panels</b>	RAL 9002 coded oven-baked painted steel sheet
	<b>Corner columns</b>	Standard oil-based paint
<b>ELECTRICAL İNSTALLATION</b>	<b>System</b>	Surface plastering
	<b>Materials</b>	Electrical wiring, circuit breakers, fuse boxes, fixtures, sockets, and switches are included
<b>PLUMBING İNSTALLATION</b>	<b>System</b>	Surface plastering
	<b>Materials</b>	In WC-shower containers, sinks, faucets, toilet bowls, and shower trays are included.

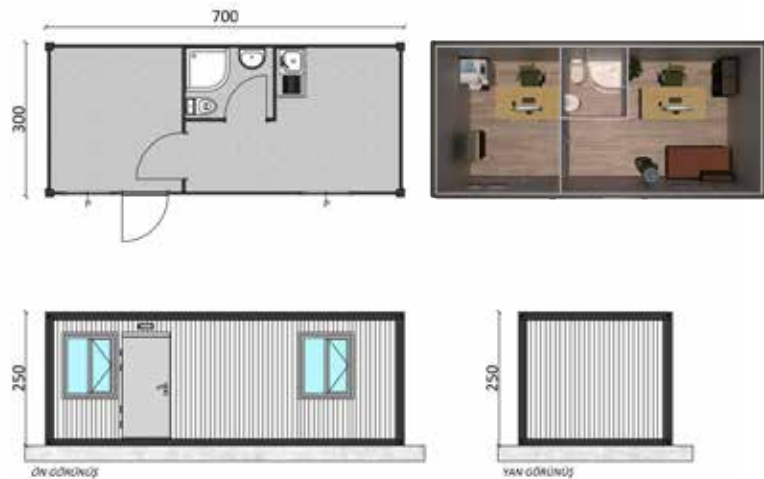
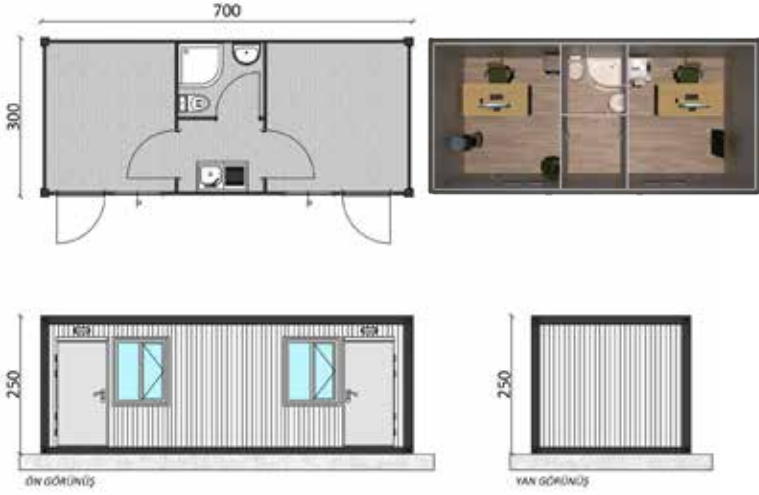


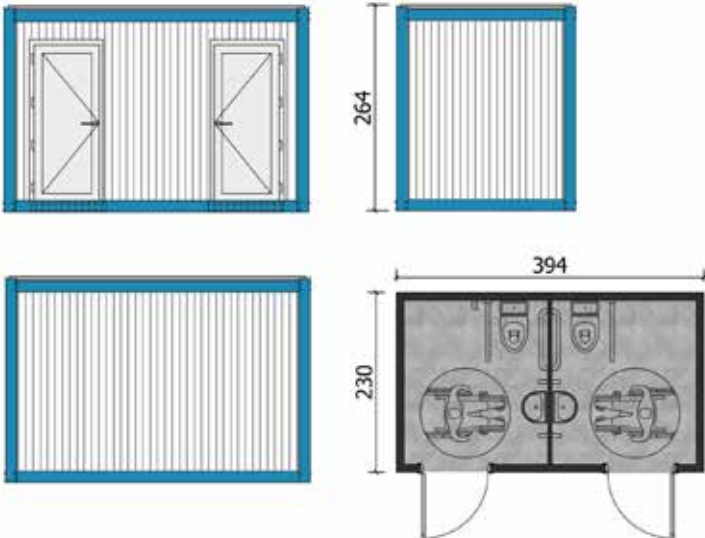
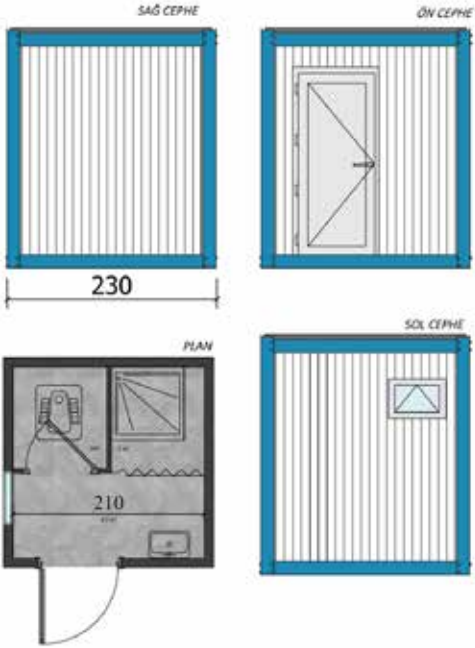
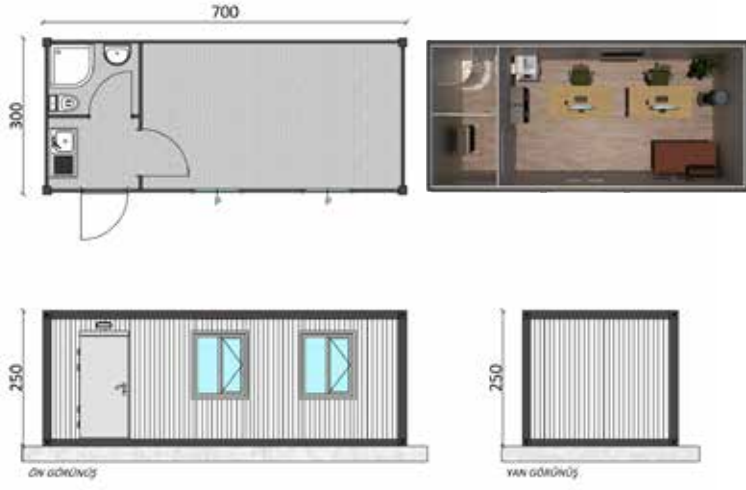














**UYGULANAN PROJELER / PROJECTS IMPLEMENTED**





Aydıntepe Mah. Akyıldız Çıkması  
E5 Yanyol No: 10  
İçmeler / Tuzla / İstanbul / Türkiye



+90 545 191 34 34



info@tekprefabrik.com



tekprefabrik



tek.prefabrik